

**DECLARATION OF CONFORMITY
CERTIFICATE OF COMPLIANCE**



Declare under our sole responsibility that the product

Unwinder Unit

UW2S, UW4S, UW5S, UW6S

To which this declaration relates

Is in conformity with the following standards

Machine Directive:

89/392/EEC, 91/368/EEC, 93/44/EEC, 93/68/EEC

Certifies that all our Unwinder models

UW2S, UW4S, UW5S, UW6S are

compliant with the European Union Directive 2002/95/EC for the Restriction of the use of Hazardous Substances in Electronic Equipment (**RoHS**), and European Union Directive 2002/96/EC on waste electrical and electronic equipment (**WEEE**).

No Lead(Pb), Cadmium(Cd), Mercury(Hg), Chromium(Cr), PBB or PBDE is intentionally added to these devices. Any trace impurities of these substances contained in the machines are below the RoHS specified threshold levels.

Pb, Hg, Cr+6, PBB, PBDE <1000 ppm

Cd < 100 ppm

All information provided in this Certificate of Compliance is accurate, to the best of our knowledge, as of the date this certification was issued.

Czestochowa, 15 January 2011

J. Austad

J. Austad

Technical Director

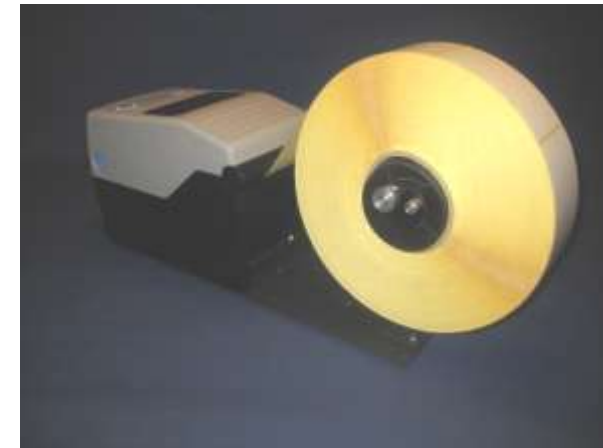


External Unwinder UW2S

For Sato CG2i Printer

Art. No. 104-20-00

Installation guide.



Thank you very much for purchasing the Unwinder UW2S. The Unwinder is intended for unwinding labels, tickets and tags.

Please be sure to read this information before using the Unwinder.

Verifying 1 pcs Main unit UW2S
contents: 1 pcs Installation Guide
1 plastick bag with screws.

Specification: Bobbin length, 85mm
Label roll size, 38-240mm*
Dimensions: L (max) 300mm
W (max) 120mm
H (max) 150mm
Weight 1,0kg

*240mm when 38mm bobbin core are used.



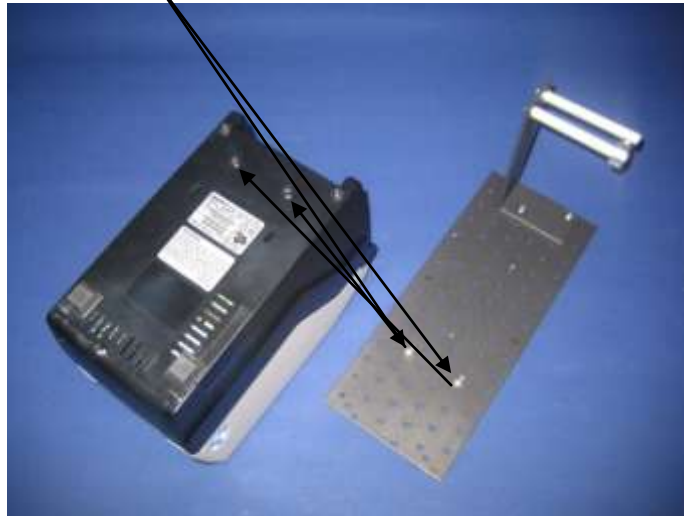
Wichrowa 49
42 280 Czestochowa
Poland



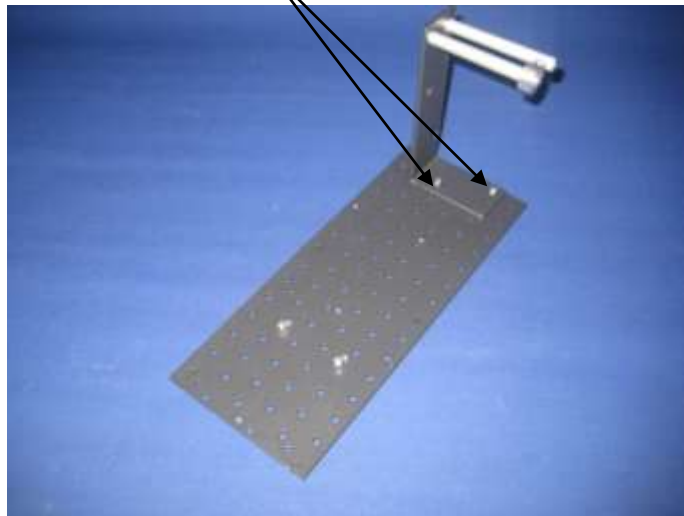
Phone: +48 343 666 308
e-mail: info@nasab.com
Internet: www.nasab.com

Connection:

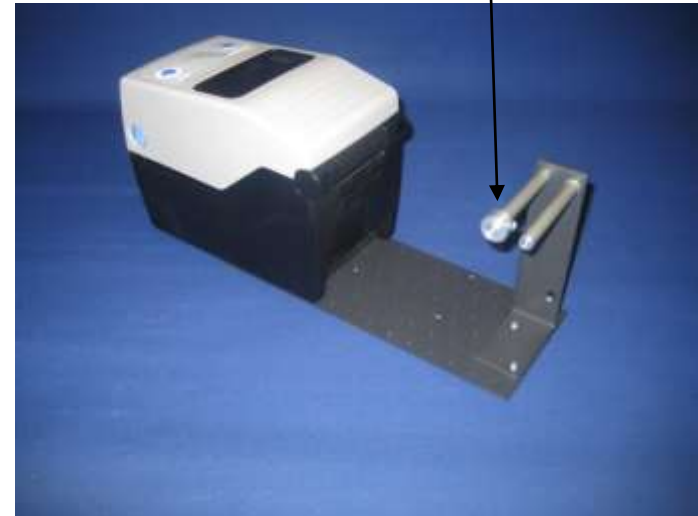
- Put the printer on a table with enough space in rear of it.
- Put the CG2 Printer together with the Unwinder unit, using the 2 M4 Screws to fit in the 2 holes under the Printer.



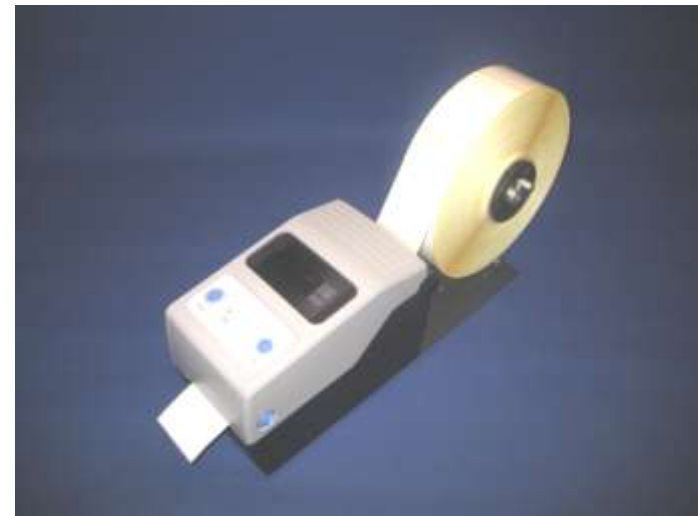
- Connect the label roll holder together with the bottom sheet using the 2 M4 screws.



- Adjust the 2 side guides for your label size.
- If full wide labels are used, use only 1 side guide..



- Start to print.



- If any problem or you want to have help pls. contact your local dealer where you bought the device.